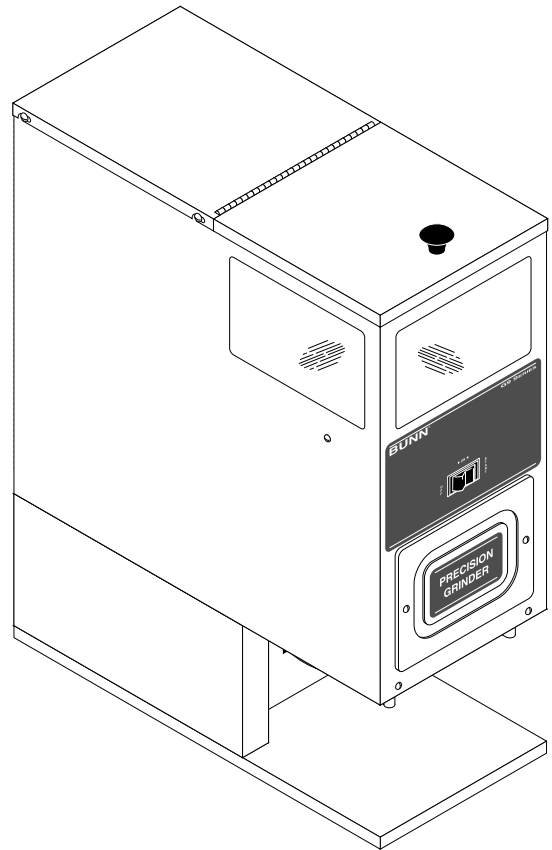
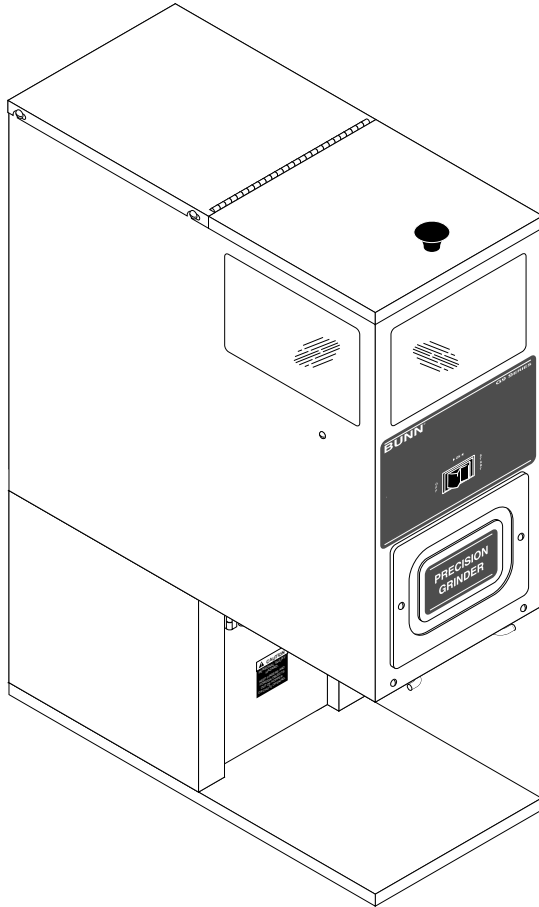


BUNN®

G9 HD

G9T HD



ILLUSTRATED PARTS CATALOG

Designs, materials, weights, specifications, and dimensions for equipment or replacement parts are subject to change without notice.

BUNN-O-MATIC CORPORATION OF CANADA LTD.

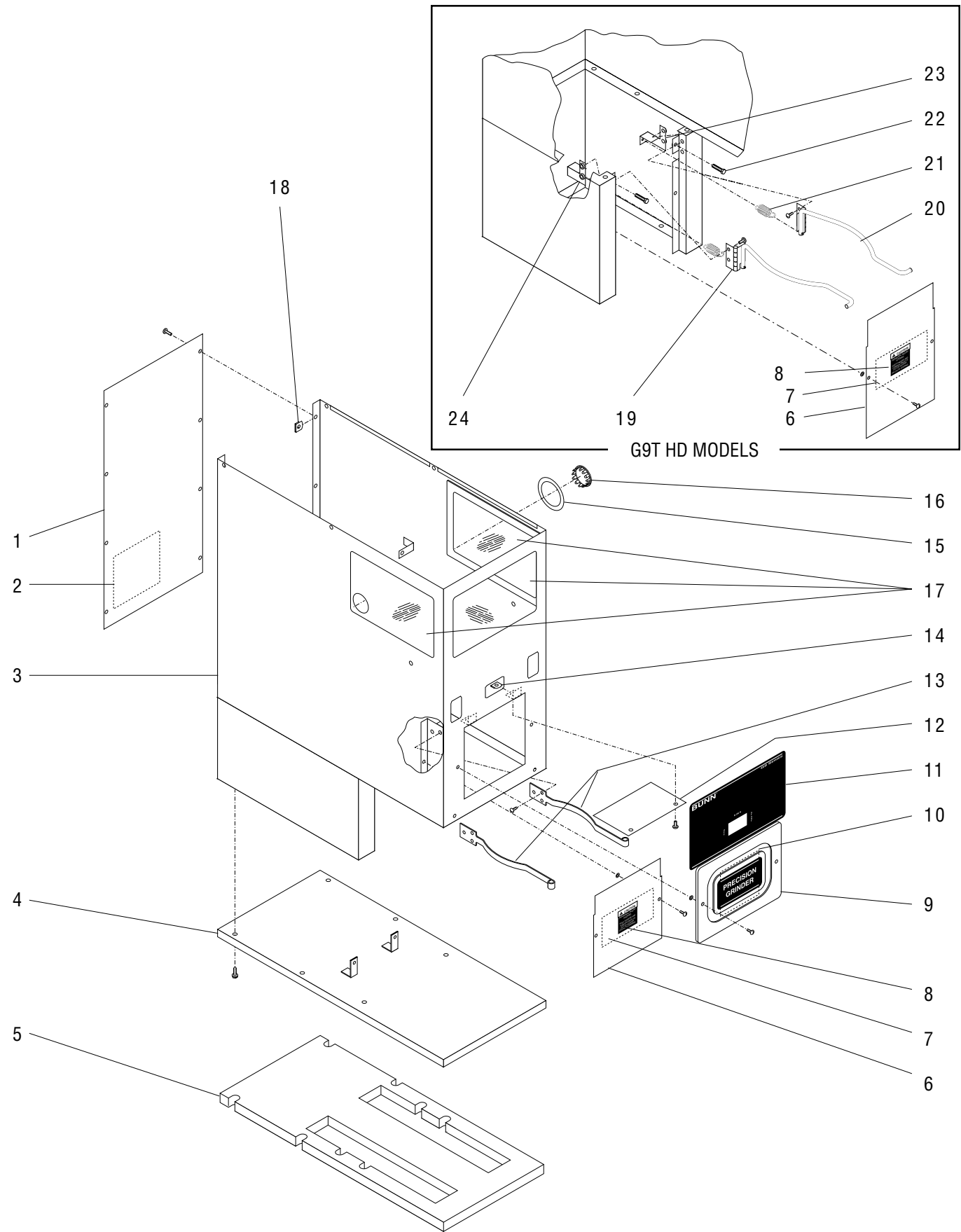
280 INDUSTRIAL PARKWAY SOUTH

AURORA, ONTARIO. L4G 3T9

PHONE: (905) 841-2866 FAX: (905) 841-2775

TABLE OF CONTENTS

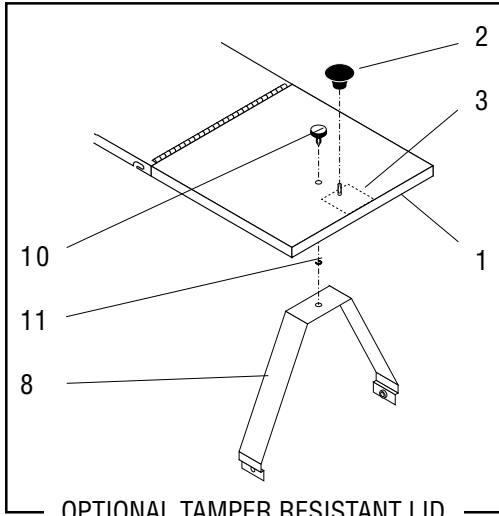
TITLE	PAGE NO.
Electrical Controls	8
Hopper & Lid Assy	4
Housing, Base and Panels	2
Motor, Burr housing and Mounting Plate	6
Numerical Index	10



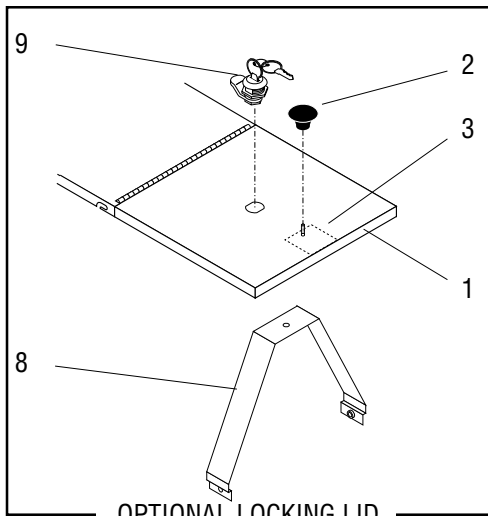
HOUSING, BASE AND PANELS

ITEM	PART NO.	QTY.	DESCRIPTION
1	05844.7999	1	Rear Panel W/Decal (Includes item 2)
	01315.7998	8	Screw, Truss Head 8 - 32 x .38" (PKG. 12)
2	20545.7000	1	Decal, Warning Electrical
3	25407.7000	1	Housing Assy W/Decals (G9 HD)
	25408.7000	1	Housing Assy W/Decals (G9T HD)
			} Includes items 15, 16 & 3 of item 17. Also order item 11
4	05809.0000	1	Base (G9 HD) (Shown)
	05752.0000	1	Base (G9T HD)
	01330.7999	6	Screw, Hex Crimptite 10 - 32 x .50" (PKG. 12)
5	05816.0000	1	Pad, Base
6	21619.7000	1	Panel Assy W/Decals (G9 HD)
	21619.7003	1	Panel Assy W/Decals (G9T HD)
	23346.7000	1	Panel Assy W/Decals (G9 HD W/Multi Set Option)
	23356.7000	1	Panel Assy W/Decals (G9T HD W/Multi Set Option)
	01380.7999	2	Screw, Truss Head 6 - 32 x .50"
			} Includes screws below and items 7 & 8
			} Includes screws below and items 7 & 8
7	10173.7000	1	Schematic 120V
8	05876.7999	1	Decal, Caution (PKG. 12)
9	21620.7000	1	Cover Assy W/Decal(Includes screws below and item11)
	01380.7999	2	Screw, Truss Head 6 - 32 x .50" (PKG. 12)
10	24240.7999	1	Decal, Precision Grinder (PKG. 6)
11	24239.0002	1	Decal, Control Panel (Grinders with Single Set) (Shown)
	24239.0003	1	Decal, Control Panel (Grinders with Multi Set Option)
12	05827.0000	1	Plate, Switch Shield
	02308.7999	2	Screw, Pan Head 8 - 32 x .38" (PKG. 12)
13	05839.0000	2	Funnel Rail
	02308.7999	4	Screw, Pan Head 8 - 32 x .38" (PKG. 12)
14	00917.7999	2	Clip, J-Type 8 - 32 (PKG. 12)
15	05884.7999	1	Decal, Motor Reset (PKG. 12)
16	02999.0000	1	Plug, Hole 1.19" Dia.
17	05814.7999	3	Window Assy (Includes adhesive)
18	00917.7999	8	Clip, J-Type 8 - 32 (PKG. 12)
19	05771.0000	1	Funnel Rail, Left
	02308.7999	2	Screw, Pan Head 8 - 32 x .38" (PKG. 12)
20	05770.0000	1	Funnel Rail, Right
	02308.7999	2	Screw, Pan Head 8 - 32 x .38" (PKG. 12)
21	05781.0000	2	Spring
22	05743.0000	2	Screw, Stop 8 - 32 x .75"
23	05742.0000	1	Bracket, Right Spring
24	05741.0000	1	Bracket, Left Spring

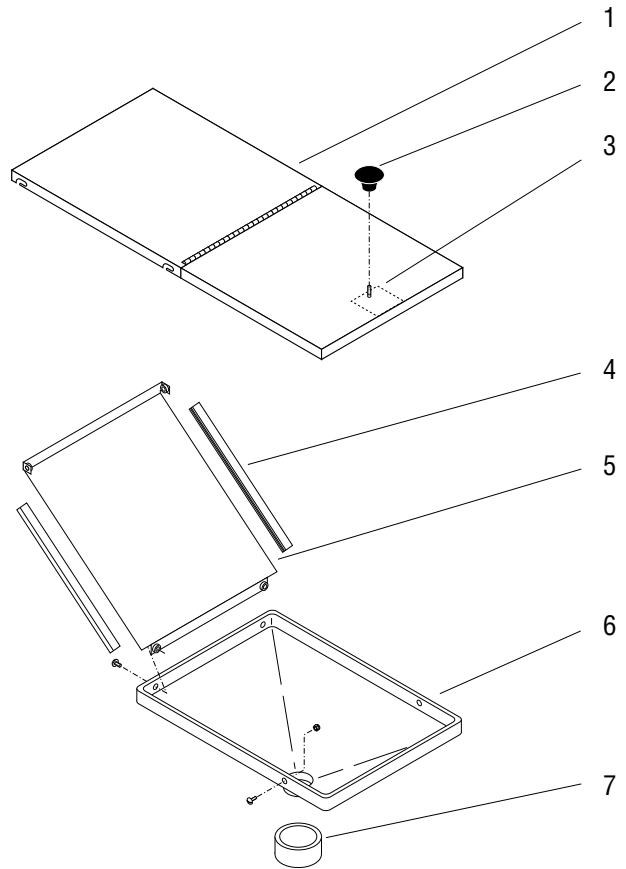
} G9T HD Models only



OPTIONAL TAMPER RESISTANT LID

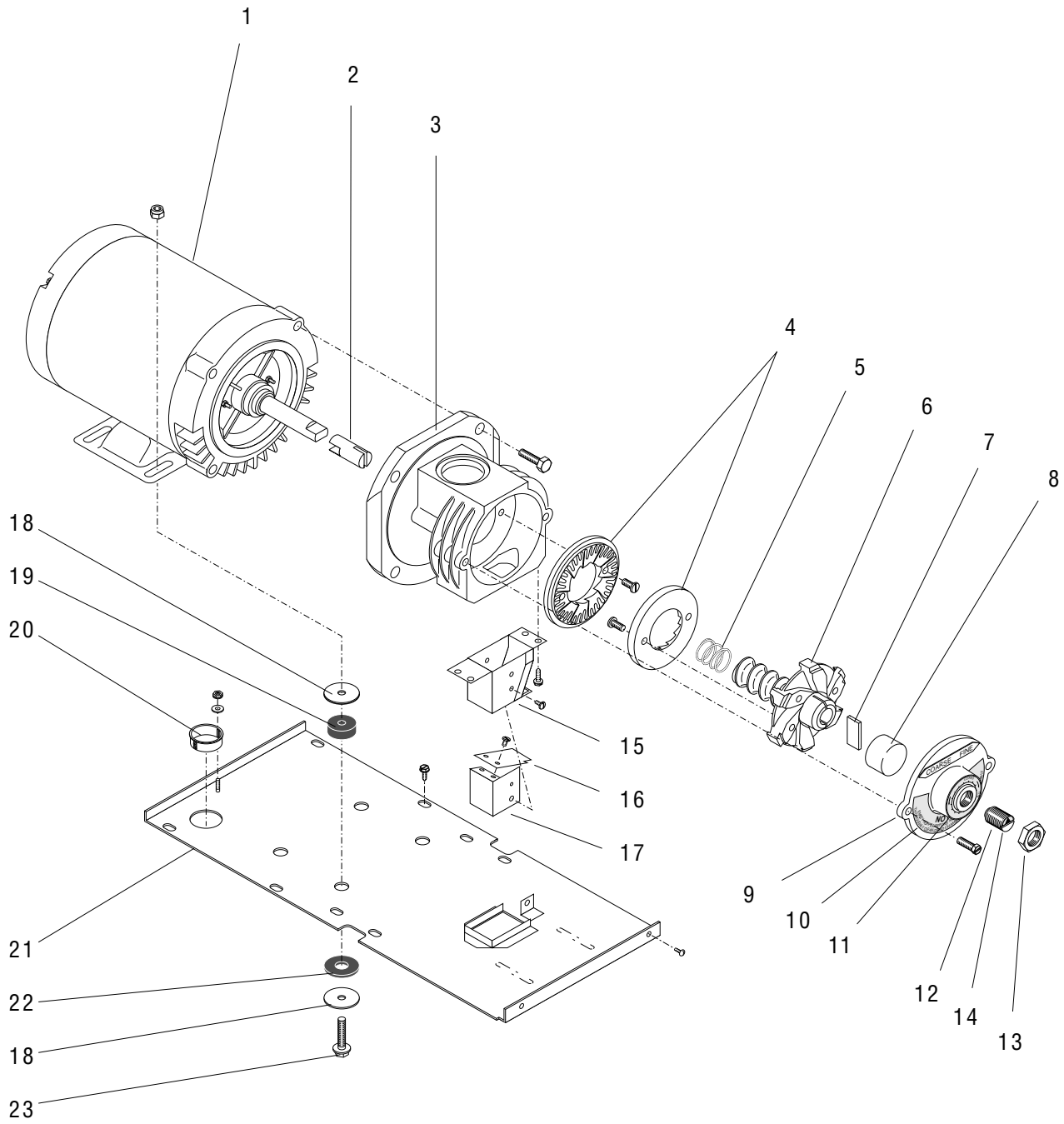


OPTIONAL LOCKING LID



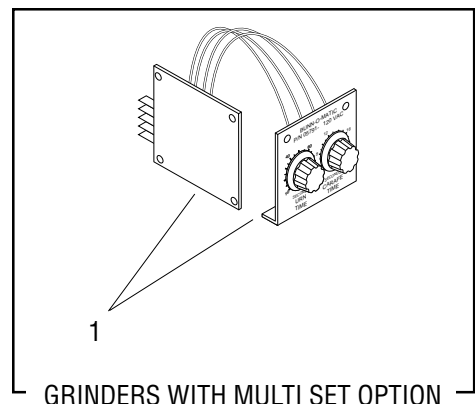
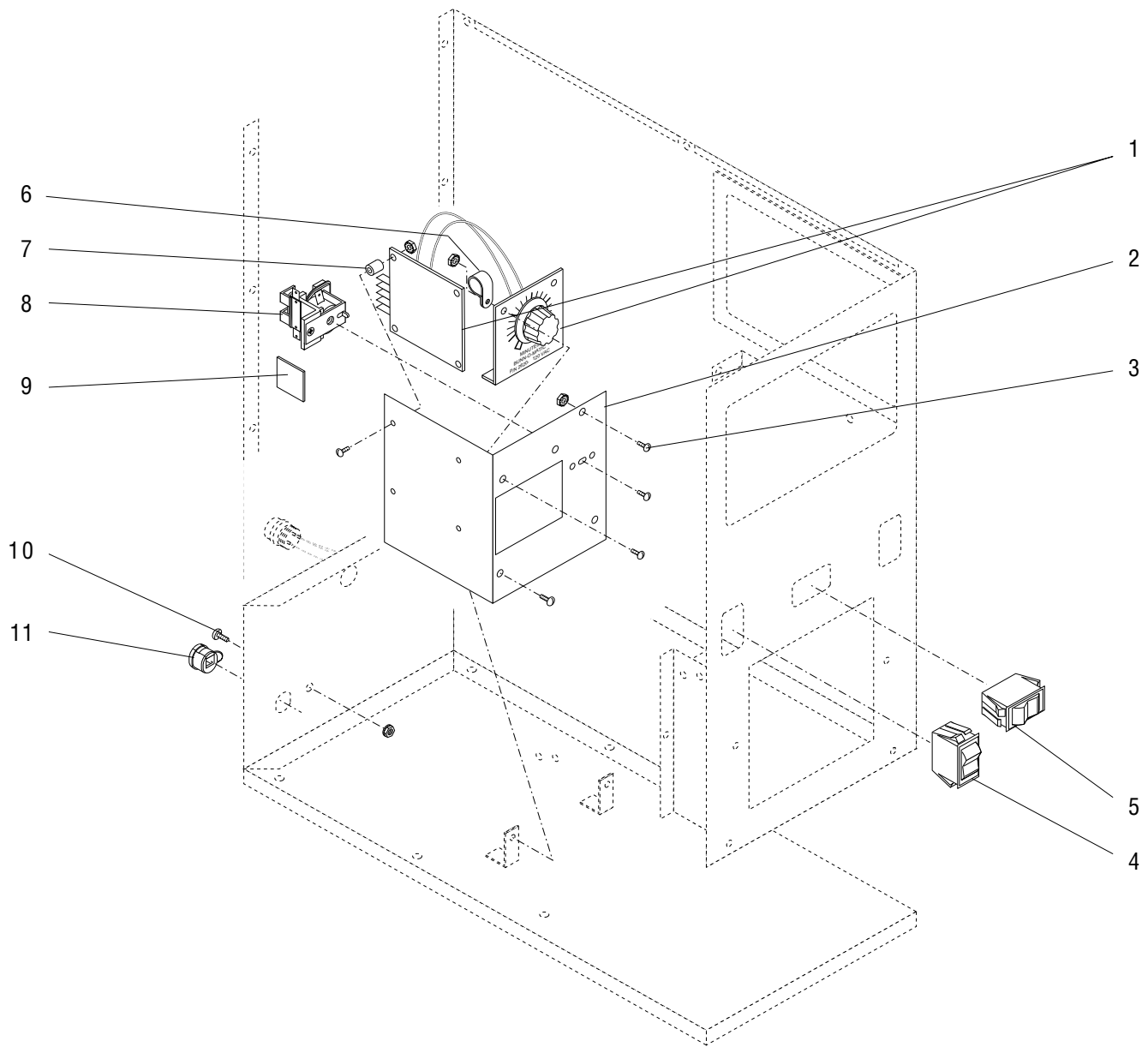
HOPPER AND LID ASSEMBLY

ITEM	PART NO.	QTY.	DESCRIPTION
1	21622.7000	1	Lid Assy, Hopper
	23347.7000	1	Lid Assy, Hopper Tamper Resistant
	23347.7001	1	Lid Assy, Hopper Locking
	02367.7999	4	Screw, Pan Head 6 - 32 x .375" (PKG. 12)
			} Includes items 2 & 3
2	00725.0000	1	Knob
3	05876.7999	1	Decal, Caution (PKG. 12)
4	-----	2	Gasket, U-Channel 8.4" (Order item 12)
5	05828.0000	1	Hopper Extension
	01380.7999	2	Screw, Pan Head 6 - 32 x .50" (PKG. 12)
6	05871.0000	1	Hopper
	01315.7998	2	Screw, Truss Head 8 - 32 x .50" (PKG. 12)
	01338.7999	2	Screw, Truss Head 8 - 32 x .625" (Tamper / Locking Lid)(PKG. 12)
	00991.7999	2	Nut, Elastic Lock 8 - 32 (PKG. 12)
7	05872.0000	1	Sleeve, Hopper
8	05797.0000	1	Bracket, Tamper Resistant Lid
	05797.0002	1	Bracket, Lid Locking
9	11628.0000	1	Lid Lock Assy (Includes Keys) (New Keys should be made locally)
10	01402.0000	1	Thumb Screw
11	01403.0000	1	E-Ring
12	02434.7999	-	Gasket, U-Channel 12.0" (Not illustrated)



MOTOR, BURR HOUSING AND MOUNTING PLATE

ITEM	PART NO.	QTY.	DESCRIPTION
1	11090.0004	1	Motor Assy (115V) - Includes item 2
2	11191.0001	1	Shaft Extension
3	11180.0000	1	Burr Housing
	02313.0000	4	Screw, Hex Head .38" - 16 x 1.0"
4	05861.1002	1	Burr Set (Includes 2 Burrs and 2 Screws below)
	02314.7999	4	Screw, Pan Head .25" - 20 x .50" (PKG. 12)
5	11192.0000	1	Spring
6	11185.0001	1	Burr Auger Rotor/Spring Assy (Includes item 5)
7	05852.7998	1	Shear Plate (PKG. 6)
8	00622.0000	1	Cup, Burr Rotor
9	05867.7999	1	Cap W/Decals, Burr Housing (Includes items 10 & 11)
	05867.7998	1	Cap & Adjustng Screw W/Decals, Burr Housing (Includes items 10 thru13) (Also order item 14)
	20631.0000	2	Screw, Slotted Hex Head .25" - 20 x .75"
10	05868.7999	1	Decal, Housing Cover (PKG. 12)
11	05880.7001	1	Decal, Grind Indicator
12	05864.0000	1	Adjusting Screw (Also order item 14)
13	00989.0000	1	Nut, Locking
14	05796.7001	1	Decal, Adjusting Screw
15	05951.0000	1	Chute
	02330.7999	4	Screw, Slotted Hex Head 10 - 24 x .50" (PKG. 12)
16	05995.0000	1	Dechaffer Plate
	02327.7999	2	Screw, Pan Head 4 - 40 x .312" (PKG. 12)
17	05954.7999	1	Dechaffer Assy (Includes item 16)
	02328.7998	1	Screw, Pan Head 6 - 32 x .188" (PKG. 12)
18	01539.0000	8	Washer, Flat
19	05881.0000	4	Bushing
20	00718.7999	1	Bushing, 1.125" Dia. Hole (PKG. 12)
21	05957.0000	1	Plate, Motor Mounting
	01330.7999	6	Screw, Slotted Hex Head 10 - 32 x .50" (PKG. 12)
	01347.7998	2	Screw, Truss Head SST 6 - 32 x .38" (PKG. 12)
22	05882.7999	4	Washer, 1.50" Dia. (PKG. 12)
23	02312.0000	4	Screw, Hex Washer Head .312" - 18 X 1.50"
	00972.7999	4	Nut, Lock .312" - 18(PKG. 12)



ELECTRICAL CONTROLS

ITEM	PART NO.	QTY.	DESCRIPTION	
1	02620.1033	1	Timer Assy (120V)	
	02620.1040	1	Timer Assy (120V) (Grinders with System III & Dual Interface Option)	
	05791.1001	1	Timer Assy (120V) (Grinders with Multi Set Option)	
	02308.7998	2	Screw, Pan Head 8 - 32 x .375" (PKG. 12)	Grinders without Multi Set Option
	00970.7999	2	Nut, Keps 8 - 32 (PKG. 12)	
	01388.7998	4	Screw, Truss Head 6 - 32 x .75" (PKG. 12)	Grinders with Multi Set Option
	00973.7999	4	Nut, 6 - 32 (PKG. 12)	
	01347.7998	2	Screw, Truss Head 6 - 32 x .375" (PKG. 12)	
	01388.7998	4	Screw, Truss Head 6 - 32 x .75" (PKG. 12)	
	00973.7999	6	Nut, 6 - 32 (PKG. 12)	
2	05817.0000	1	Bracket, Timer	
	01315.7998	2	Screw, Truss Head 8 - 32 x .375" (PKG. 12)	
3	02308.7999	1	Screw, Pan Head 8 - 32 x .375" (Ground) (PKG. 12)	Grinders without Multi Set Option
	00970.7999	1	Nut, Keps 8 - 32 (PKG. 12)	
	01347.7998	1	Screw, Truss Head 6 -32 x .375" (Ground) (PKG. 12)	Grinders with Multi Set Option
	00973.7999	1	Nut, Keps 6 - 32 (PKG. 12)	
4	05789.0000	1	Switch, Rocker (Grinders with Multi Set Option)	
5	05815.0000	1	Switch, Off/On/Start	
6	04831.7999	1	Clamp, cable (PKG. 12)	
7	01533.7999	4	Spacer, Timer Board (PKG. 12)	
8	05850.0000	1	Relay	
	01347.7998	1	Screw, Truss Head 6 - 32 x .375" (PKG. 12)	
9	22749.0000	2	Pad, Mounting Cable Tie	
10	01317.7999	1	Screw, Ground Truss Head SST 10 - 32 x .25" (PKG. 12)	
	00970.7999	1	Nut, Keps 10 - 32 (PKG. 12)	
11	00822.7999	1	Bushing, Strain Relief (PKG. 12)	
NOTE: The following items are not illustrated				
12	05887.7000	1	Wiring Harness, Main	
13	05904.7001	1	Wiring Harness, Switch/Timer (Grinders with Multi Set Option)	
14	05778.0000	1	Wiring Harness, Interface (System III Interface Option)	
	05778.0001	1	Wiring Harness, Interface (Dual Interface Option)	
15	05188.0002	1	Cable, Interface	
16	01637.7000	1	Cord Assy, Power 120V	
17	00669.0000	1	Plug, .625" Dia. (Grinders W/O Interface)	

NUMERICAL INDEX

PART NO.	PAGE NO.	PART NO.	PAGE NO.	PART NO.	PAGE NO.	PART NO.	PAGE NO.
00622.0000	7	05815.0000	9				
00669.0000	9	05816.0000	3				
00718.7999	7	05817.0000	9				
00725.0000	5	05827.0000	3				
00822.7999	9	05828.0000	5				
00917.7999	3	05839.0000	3				
00970.7999	9	05844.7999	3				
00972.7999	7	05850.0000	9				
00973.7999	9	05852.7998	7				
00989.0000	7	05861.1002	7				
00991.7999	5	05864.0000	7				
01315.7998	3,5,9	05867.7998	7				
01317.7999	9	05867.7999	7				
01330.7999	3,7	05868.7999	7				
01338.7999	5	05871.0000	5				
01347.7998	7	05872.0000	5				
01380.7999	3,5	05876.7999	3,5				
01388.7998	9	05880.7001	7				
01402.0000	5	05881.0000	7				
01403.0000	5	05882.7999	7				
01533.7999	9	05884.7999	3				
01539.0000	7	05887.7000	9				
01637.7000	9	05904.7001	9				
02308.7998	9	05951.0000	7				
02308.7999	3,9	05954.7999	7				
02311.0000	3	05957.0000	7				
02312.0000	7	05995.0000	7				
02313.0000	7	10173.7000	3				
02314.7999	7	11090.0004	7				
02327.7999	7	11180.0000	7				
02328.7998	7	11185.0001	7				
02330.7999	7	11191.0001	7				
02367.7999	5	11192.0000	7				
02434.7999	5	11628.0000	5				
02620.1033	9	20545.7000	3				
02620.1040	9	20631.0000	7				
02999.0000	3	21619.7000	3				
04831.7999	9	21619.7003	3				
05188.0002	9	21620.7000	3				
05741.0000	3	21622.7000	5				
05742.0000	3	22749.0000	9				
05743.0000	3	23346.7000	3				
05752.0000	3	23347.7000	5				
05770.0000	3	23347.7001	5				
05771.0000	3	23356.7000	3				
05778.0000	9	24239.0002	3				
05778.0001	9	24239.0003	3				
05781.0000	3	24240.7999	3				
05789.0000	9	25407.7000	3				
05791.1001	9	25408.7000	3				
05796.7001	7						
05797.0000	5						
05797.0002	5						
05809.0000	3						
05814.7999	3						