

# Ultra<sup>®</sup> Gourmet Ice<sup>®</sup> Systems

rozen beverage dispenser with patented reversing auger technology for superior mixing and freeze

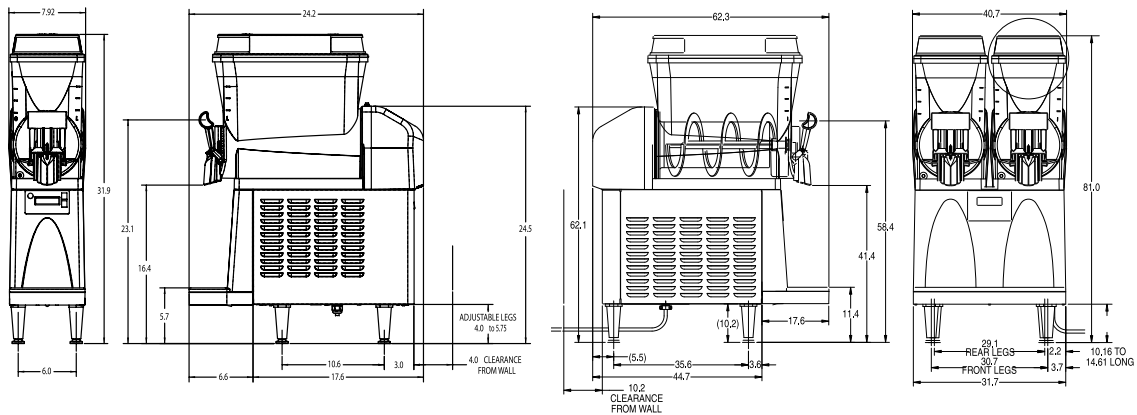


Ultra-1

Ultra-2

## PRODUCT FEATURES

- Patented reversing auger design quickens freeze time and reduces air mixing with product.
- Two large 11.4 litre hoppers for optimum cooling and serving capacity.
- Very simple to program and run with touchpad display, which also guides cleaning and preventive maintenance.
- Internally monitored refrigeration system to ensure long lasting performance.
- Lighted displays for merchant graphics.
- English/Spanish/French display.
- Autofill models (AFI) include autofill hoppers and factory installed liquid autofill kit for use with third party brix pumps.



## Ultra Gourmet Ice Systems

Product #	Description	Shipping Weight	Electrical					Cord	Agency
			Volts	Amps	Watts	Hertz	Phase		
39800.0001	Ultra-1A, white/stainless	34.7 kg	230	4	600	50	1	Yes	NSF CE
39800.0003	Ultra-1A, black/stainless								
39800.0005	Ultra-1A, black								
39800.0006	Ultra-1B, black/stainless		100	6	50/60				
39800.0009	Ultra-1B, white/stainless								
34000.0002	Ultra-2A, all black	62.1 kg	230	8.8	1800	50/60	1	Yes	NSF CE
34000.0003	Ultra-2A, white/stainless	80.6 kg							
34000.0065	Ultra-2A, white/stainless, AFI								
34000.0066	Ultra-2A, black/stainless, AFI								
34000.0071	Ultra-2, white/stainless, painted frame, Spanish	55 kg	230	12	1200	50/60	1	Yes	NSF CE
34000.0074	Ultra-2B, black/stainless	62.1 kg	100						
34000.0084	Ultra-2B, white/stainless								
34000.0091	Ultra-2A, black/stainless			230	8.8	1800			
34000.0093	Ultra-2A, white/stainless								

# Powdered Ultra<sup>®</sup> Gourmet Ice<sup>®</sup> Systems

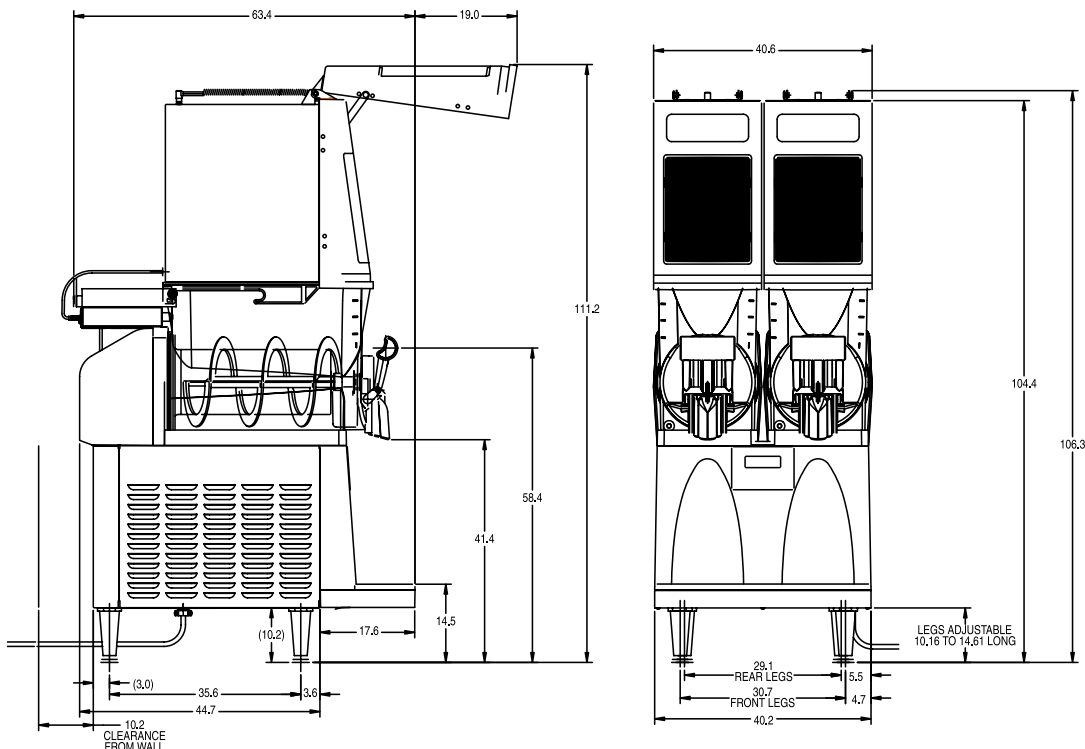
rozen beverage dispenser with patented reversing auger technology for superior mixing and freeze



Ultra-2 PAF

## ULTRA-2 PAF FEATURES

- Powdered product autofill hoppers refill product at a rate of .03 litre/second.
- Two large 7.57 litre hoppers for optimum cooling and serving capacity.
- Patented reversing auger design quickens freeze time and reduces air mixing.
- Very simple to program and run with touchpad display, which also guides cleaning and preventive maintenance.
- Internally monitored refrigeration system ensure long lasting performance.
- Lighted displays for merchant graphics.
- Alphanumeric display communicates advertising messages, machine status and technical support contact information in English, Spanish and French. Display capable of showing English or Metric measurements.



## Powdered Ultra Gourmet Ice Systems

Product #	Description	Shipping Weight	Electrical					Cord	Agency
			Volts	Amps	Watts	Hertz	Phase		
34000.0502	Ultra-2 PAFA, white/stainless	80.6 kg	230	8.8	1800	50/60	1	Yes	
34000.0503	Ultra-2 PAFA, all black								

Plumbing: 138-621 kPa. Machine supplied with 1/4" male fitting. All plumbed models that are CE listed feature backflow prevention.